

Electrical Specs	L350SS	L350DS	L350TS	L350QS
Continuous Force ¹	24N (5.4lbs)	43N (9.7lbs)	55N (12.4lbs)	74N (16.6lbs)
Continuous Current ¹	2.0Arms	1.8Arms	1.6Arms	
Acceleration Force ²	95N (21.4lbs)	170N (38.2lbs)	222N (49.9lbs)	298N (67.0lbs)
Acceleration Current ²	7.8Arms	7.3Arms	6.4Arms	
Force Constant (K_f)	12N/amp (2.7lbs/amp)	23N/amp (5.2lbs/amp)	35N/amp (7.9lbs/amp)	47N/amp (10.6lbs/amp)
Back EMF (K_e)	4.0V/m/s	7.7V/m/s	12V/m/s	16V/m/s
Resistance 25°C ³	2.7Ω	5.3Ω	7.9Ω	11Ω
Inductance ³	2.9mH	4.4mH	6.7mH	8.7mH
Electric Time Constant	1.09ms	0.83ms	0.85ms	0.82ms
Fundamental Motor Constant (K_m)	7.42N√W	10.08N√W	12.28N√W	14.31N√W
Magnetic Pitch (North-North)	60mm (2.36in)			

Is this the proper Linear Shaft Motor for your application? Use our **SMART sizing program** to assist in your decision.

This motor can be customized to fit your application demands; contact your application engineer for more information.

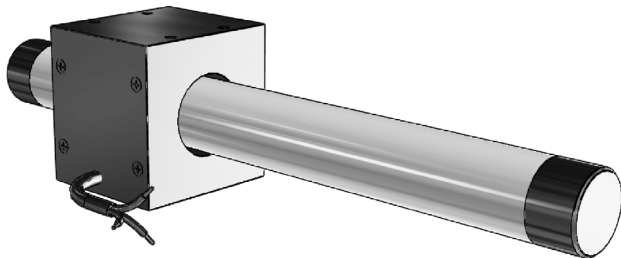
¹ Based on a temp rise of coil surface of 110°K over 25°C ambient temperature stalled forcer, and no external cooling or heat sinking.

² Can be maintained for a maximum of 40 seconds. Higher forces and current possible for short periods of time,

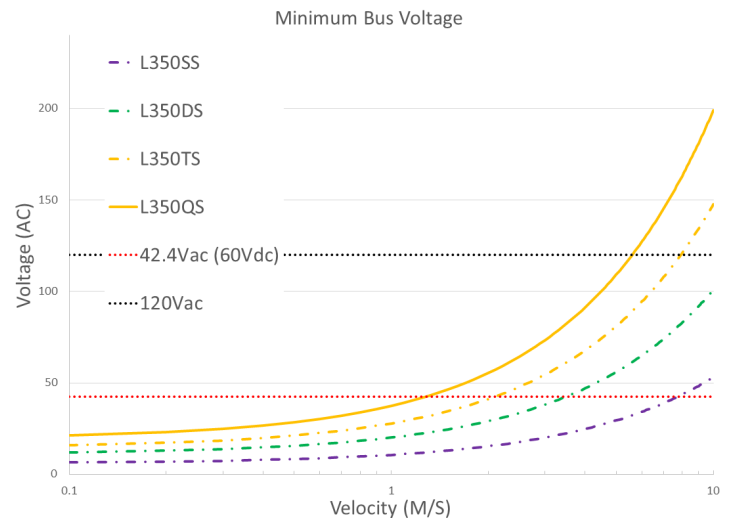
³ All winding parameters listed are measured line-to-line (phase-to-phase).

Thermal Specs	L350SS	L350DS	L350TS	L350QS
Max Phase Temperature ⁴	135°C (275°F)			
Thermal Resistance (Coil) (K_q)	11°C/W (51.8°F/W)	6.2°C/W (43.16°F/W)	5.4°C/W (41.72°F/W)	4.1°C/W (39.4°F/W)

⁴The standard temperature difference between the coil and the forcer surface is 40°C.



Bus Voltage



Sold & Serviced By:

SERVO2GO.com

Toll Free Phone: 877-378-0240

Toll Free Fax: 877-378-0249

sales@servo2go.com

www.servo2go.com

Forcer Specs	L350SS	L350DS	L350TS	L350QS
Forcer Length (A)	50mm (1.97in)	80mm (3.15in)	110mm (4.3in)	140mm (5.51in)
Forcer Width	60mm (2.36in)			
Forcer Screw Pitch (P)	40mm (1.57in)	70mm (2.76in)	100mm (3.94in)	130mm (5.12in)
Forcer Weight	0.34kg (0.75lb)	0.56kg (1.23lb)	0.78kg (1.72lb)	1.0kg (2.20lb)
Gap	3mm (0.12in)			

Tolerances are as follows:

Dimension (mm)	Tolerance (mm)
0 - 6	±0.1
7 - 30	±0.2
31 - 120	±0.3
121 - 315	±0.5
316 - 1000	±0.8
1001 - 2000	±1.2
2000 -	±1.5

L = See Shaft Length

L1 = Usable Stroke + A

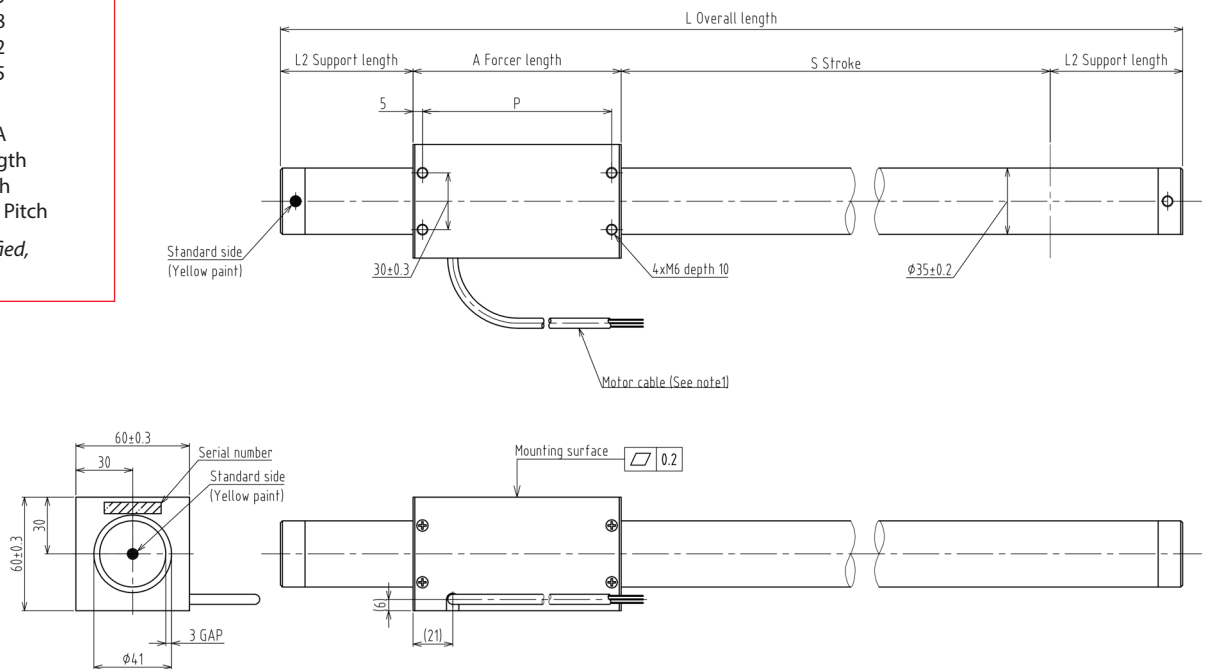
L2 = See Support Length

A = See Forcer Length

P = See Forcer Screw Pitch

Unless otherwise specified, dimensions are in mm

Note: Cable length 300mm. The bending radius of the motor cable should be 36.6mm (wire diameter 6.1 * 6) as suggested by the wire manufacturer. This radius should be maintained. Use supplied connector to attach the proper high-flex cable as required by your application.



Note: Metric units guaranteed. Imperial (United States customary) units are calculated.

Sold & Serviced By:

SERVO2GO.com

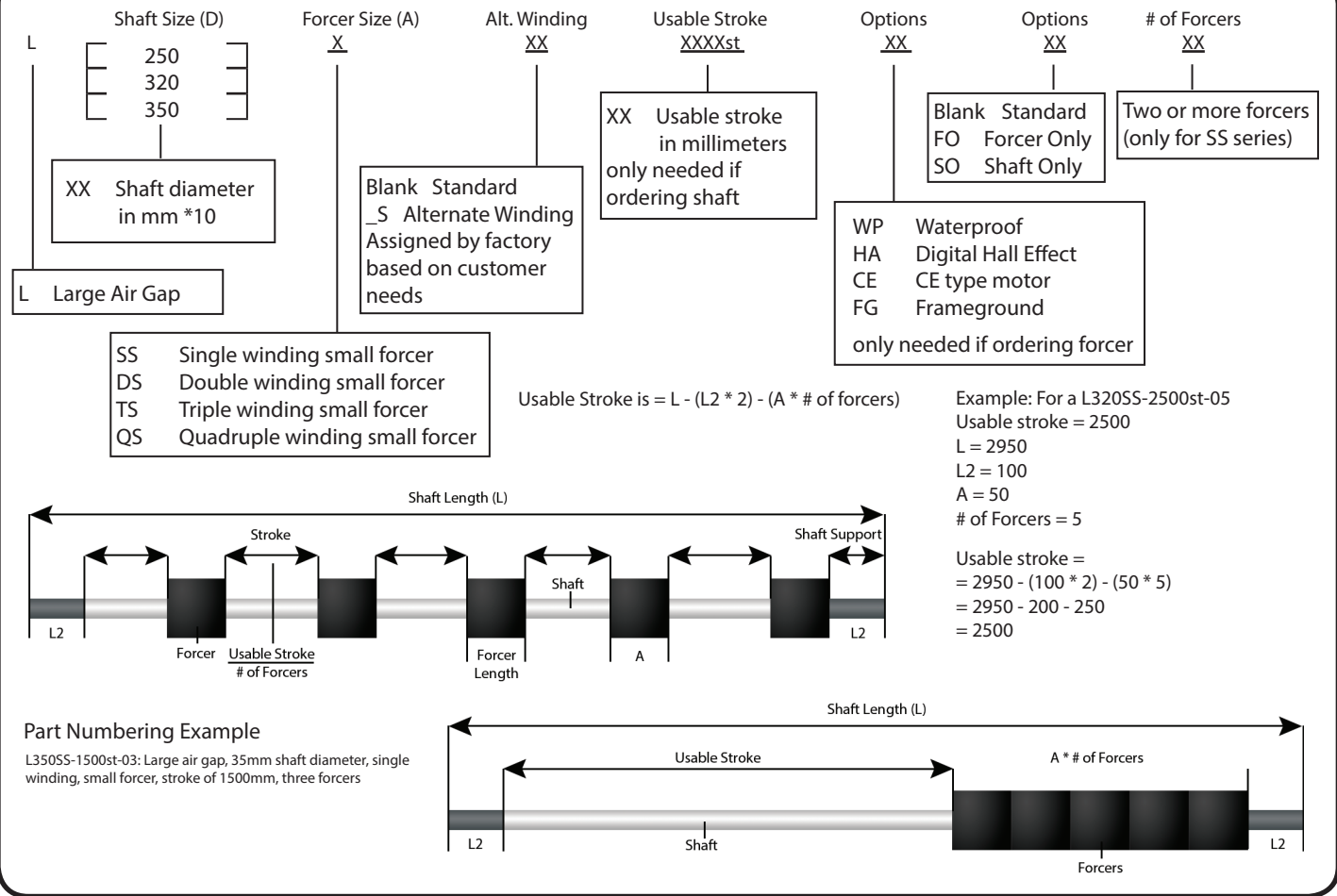
Toll Free Phone: 877-378-0240

Toll Free Fax: 877-378-0249

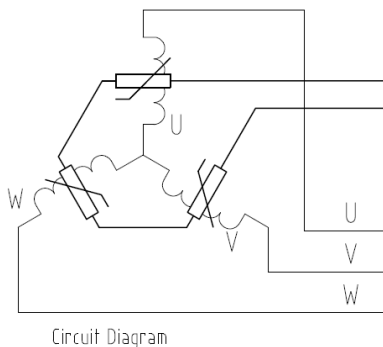
sales@servo2go.com

www.servo2go.com

Linear Shaft Motor Part Numbering Guide (SS Series)

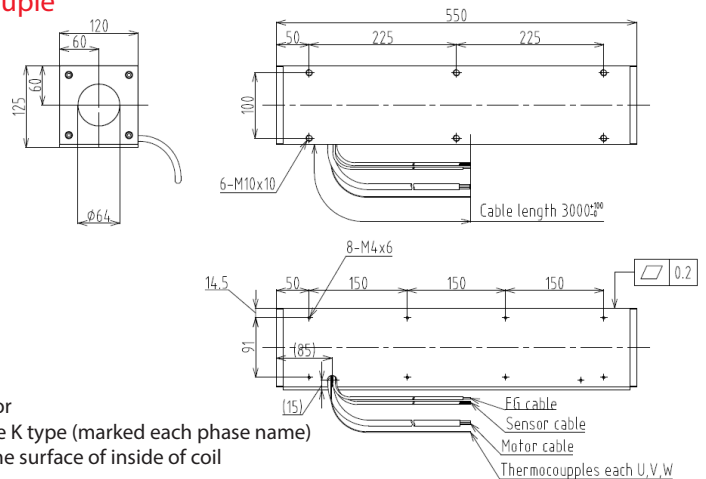


THM Option



4. Thermistor
PTCSL20T071DBE (Vishay)

Thermocouple



Sold & Serviced By:

SERVO2GO.com

Toll Free Phone: 877-378-0240

Toll Free Fax: 877-378-0249

sales@servo2go.com

www.servo2go.com